



case study

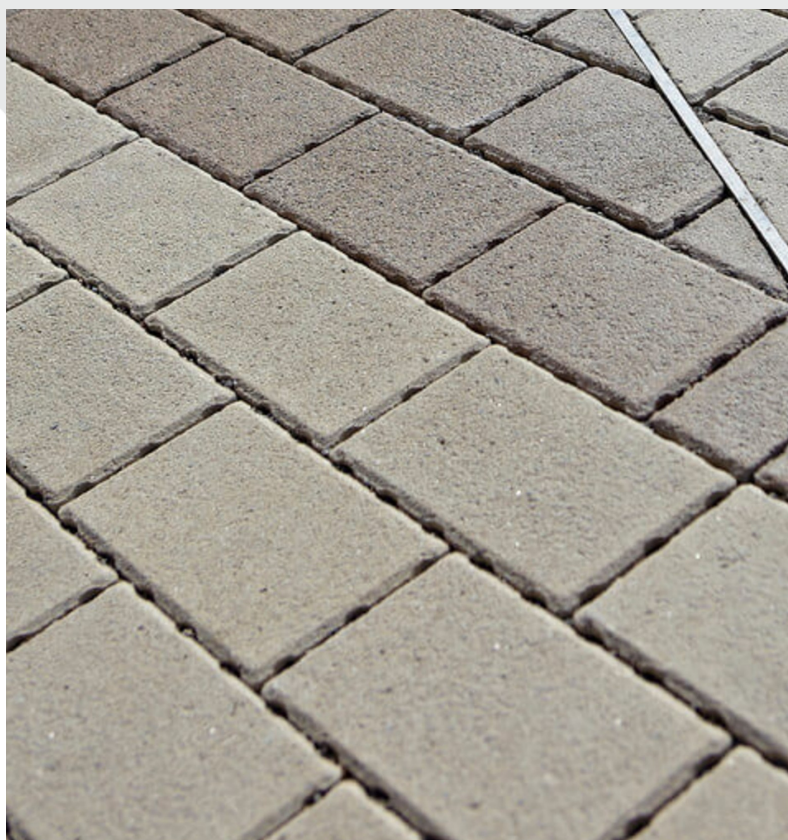
# Grangegorman TU Dublin Central Quad

## Grangegorman, Dublin

Featured Products: **KPRO Coloured Masonry Mortar**, **KPRO Streetscape Bedding System** & **Clima-Pave Grange Pre-Sealed**



The new TU Dublin development which spans 52,000m<sup>2</sup>, will accommodate 10,000 students and will provide academic facilities for ten schools from the College of Sciences & Health, the College of Engineering & Built Environment and the College of Arts and & Tourism from TU Dublin.



**KPRO Coloured Masonry Mortar**  
- Pale Cream

**KPRO Streetscape Bedding System**  
- KPRO Street High Strength Bedding Concrete  
- KPRO Street Priming Slurry  
- KPRO Street Rapid Setting Jointing Mortar

**Clima-Pave Grange Pre-Sealed**  
- Autumn Brown  
- Autumn Oyster

**Client:**  
Grangegorman Authorities and TU Dublin

**Architect:**  
Scott Tallon Walker

**Landscape Architect:**  
Mitchell & Associates

**Contractors:**  
John Sisk & Son

