



**Kilsaran**

# Broadstone Gate

## Grangegorman, Dublin

Featured Products: **KPRO Streetscape Bedding System & Concrete**

case study



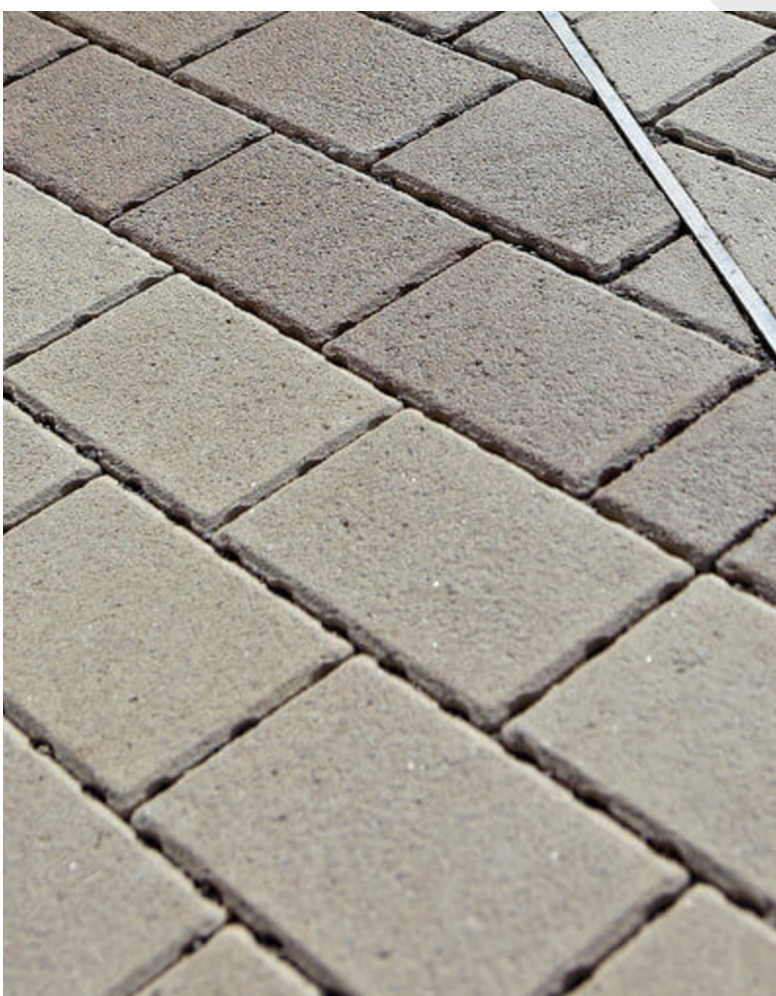
The Broadstone Gate will provide a key access to the Grangegorman site once complete and is being developed as part of the Luas Cross City works. It will be finished as a public plaza and the access will provide a major linkage between Grangegorman and Dublin City.



### **KPRO Streetscape Bedding System**

- KPRO Street High Strength Bedding Concrete
- KPRO Street Priming Slurry
- KPRO Street Rapid Setting Jointing Mortar

### **Concrete**



**Client:** TII & Grangegorman Development Agency

**Architect:**  
DMOD Architects  
Mitchell & Associates

**Contractors:**  
SIAC Construction