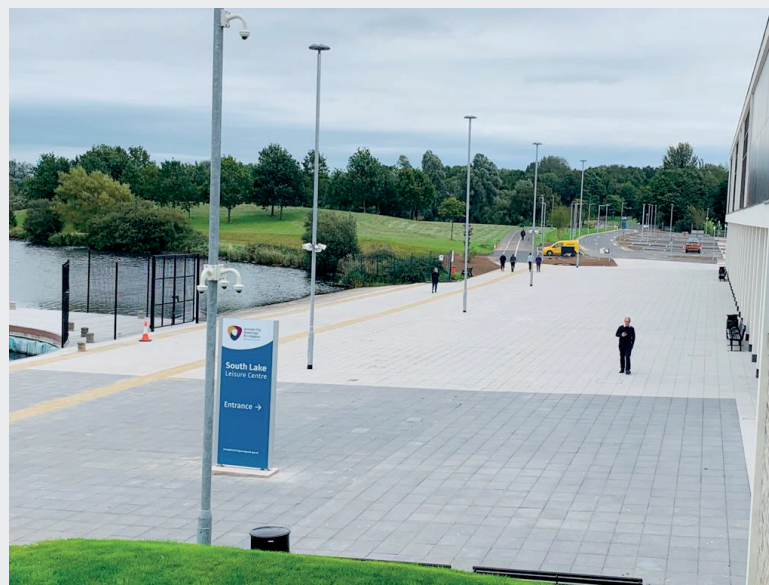




case study

South Lake Leisure Centre

Brownlow Road, Craigavon, Armagh



Kilsaran products supplied
in conjunction with
our trade partner
JP Corry:

Project Size: 5000 sqm

Newgrange Flag Paving
Silver & Black Granite

Newgrange Block Paving
Black Granite

Tara Kerb
Silver Granite

Client:
Armagh City Banbridge
& Craigavon Borough Council

Architect:
McAdam Design Ltd.

Contractor:
Farrans Construction Ltd.

Laying Contractor:
Castle Paving, Omagh, Tyrone.